

NEW MULTI FUNCTION GAUGE

MAIN FEATURES

HIGH PERFORMANCE

- Multi-function gauge displays a wide variety of information such as engine rpm, speed, trim angle, as well as diagnostics based on digital data received from the outboard motor.
- Gauges offer great reliability utilizing Suzuki's original warning system to provide the operator with accurate warning information.
- NMEA2000® terminal offers compatibility with a wide range of marine equipment by other manufacturers (pending).

SUPERIOR VISIBILITY

- First color LCD offered as genuine parts by an outboard manufacturer. Suzuki's next generation standard equipment gauge offers easy to use multi-function operation with superior readability.
- Easy to see, easy to read, easy to understand display offers a variety of modes including day and night modes and digital or analog readouts.

COMPACT

- Compact, highly versatile gauge requires an 85mm hole for mounting making them the perfect replacement for 4-inch analog gauges.

*1 4-inch gauges that require 85mm mounting holes (as researched by Suzuki).

*2 NMEA2000® is an NMEA (National Marine Electronics Association) standard communication protocol used for exchanging data between marine control units.

DISPLAY VARIATIONS



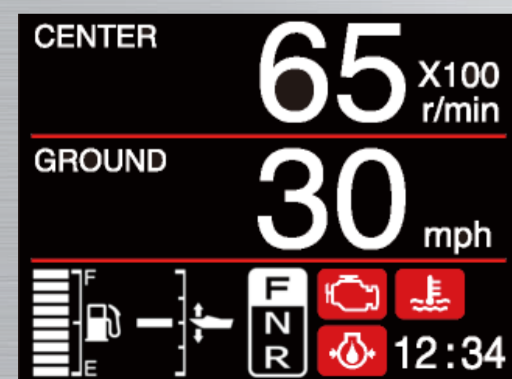
Analog All



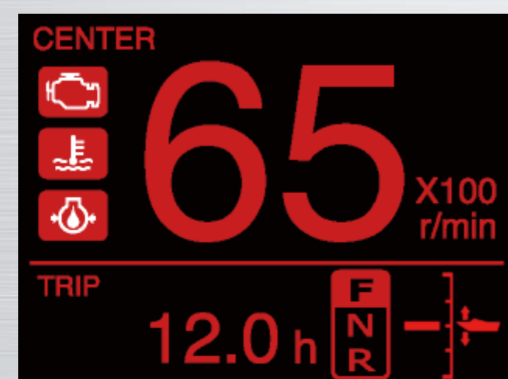
Analog Speed (Night)



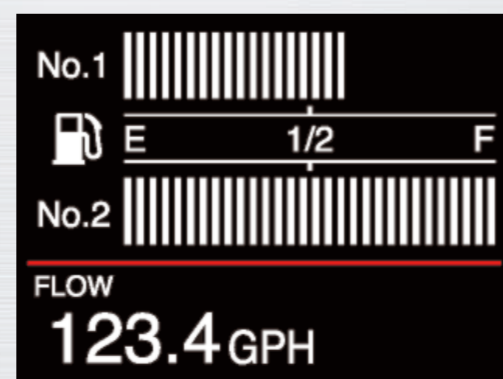
Analog Tacho



Digital All



Digital Tacho (Night)



Fuel

DESIGN



Analog/Day mode



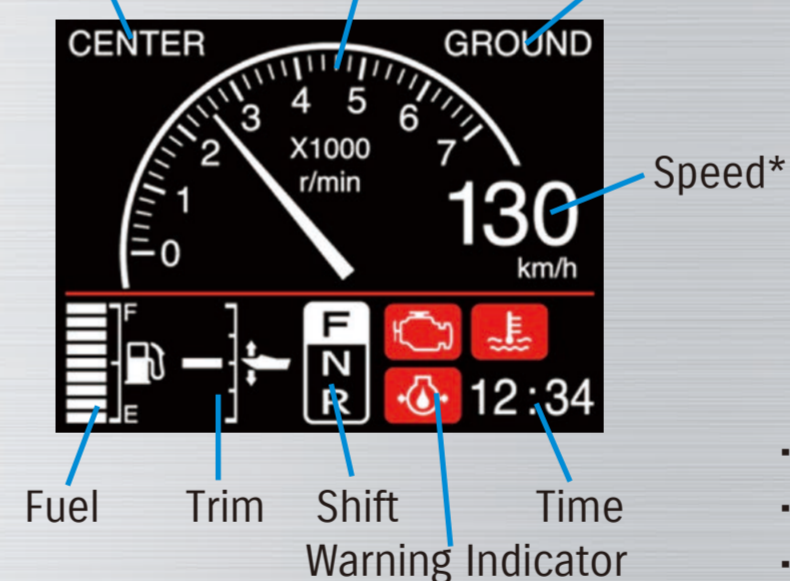
Digital/Night mode



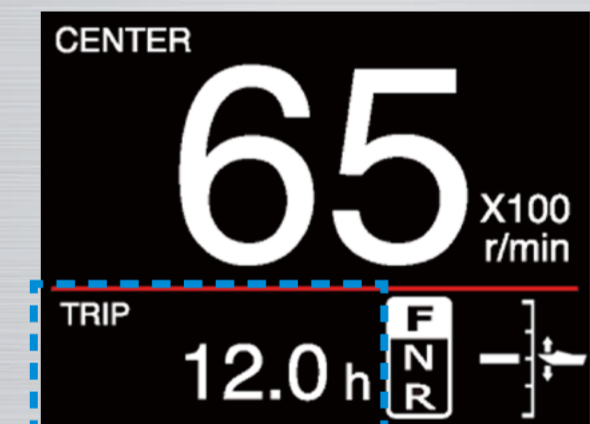
INFORMATION

Analog Tacho & Speed Mode

Engine position Engine rpm Ground or Water



Tacho Mode



- Fuel flow [l/h, gph] (instantaneous)
- Mileage [km/l, mpg] (instantaneous and average)
- Trip time [h], Trip distance [km, M, NM]
- Engine hour, Voltage, Water temp and more...

SPECIFICATIONS

- 3.5" Color display
- Size: 105mm(W)×105mm(H)×16mm(D)
- Diagnostic display
- Easy installation and setup
Φ85mm hole & large resin nut
- Includes protective cover
- NMEA2000 output (pending)
- Applicable models:
DF9.9B-DF300AP

* Speed sensor or GPS module will be required in order to display the speed.

